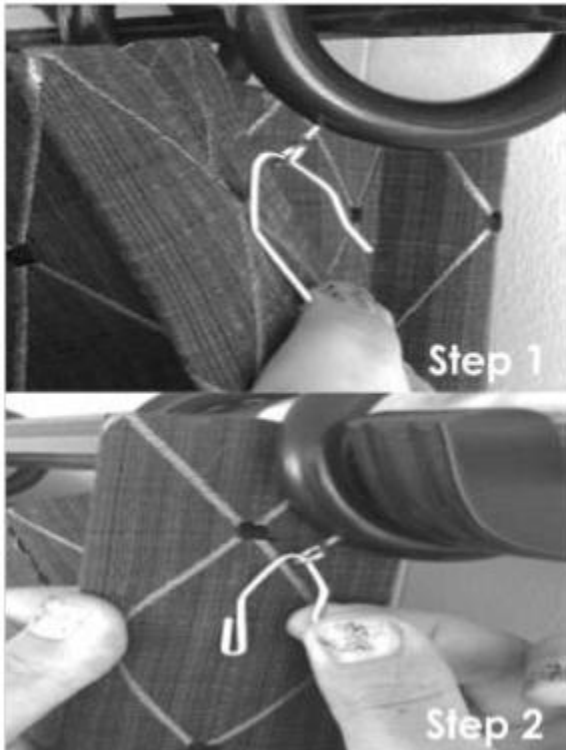


Rod Mounted Valance (Pinch Pleat, Tailored Pleat) Installation Instructions

Getting Started

Carefully read all instructions before you begin installation. Please make sure that you have your rod hardware mounted to the wall. Your valance will come with the drapery hooks preinstalled.



Installing Your Pleated Draperies

1. Start on either end and insert drapery hooks into eyelet on the rings.
2. (OPTIONAL) Once the valance is in place you may adjust the drapery hook height +/- 1" as needed.

Drapery Care

Once the Valance is installed most wrinkles and folds will hang out on their own within 1 - 2 weeks. A garment / commercial steamer may also be used to help smooth out the wrinkles. Certain fabrics like silks or linens have natural characteristics that steaming won't remove.

Questions?

Our dedicated customer service team is available to help. Contact us at 1-800-256-5005 or customercare@regaldrapes.com.