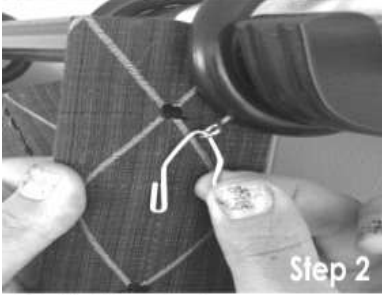
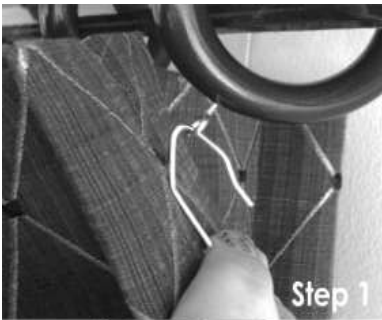


## Pleated Drapery (Goblet, Inverted, Pinch, Tailored) Installation Instructions

### Getting Started

Carefully read all instructions before you begin installation. Please make sure that you have your rod drapery hardware mounted to the wall. Your pleated drapery will come with the drapery hooks pre-installed.



### Installing Your Pleated Draperies

1. Start on either end and insert drapery hooks into eyelet on traverse rod or round rings.
2. (OPTIONAL) Once the draperies are in place you may adjust the drapery hook height +/- 1" as needed to get the proper height or concealment of the drapery rod.
3. Adjust the folds to achieve desired look.

### Drapery Care

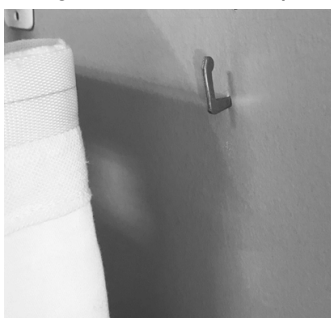
Once the draperies are installed most wrinkles and folds will hang out on their own within 1 - 2 weeks. A garment / commercial steamer may also be used to help smooth out the wrinkles. Certain fabrics like silks or linens have natural characteristics that steaming won't remove.

### Questions?

Our dedicated customer service team is available to help. Contact us at 1-800-256-5005 or [customercare@regaldrapes.com](mailto:customercare@regaldrapes.com)

### How to return the drape to the wall.

We recommend attaching the outer side of each drapery panel to the wall. This technique prevents the light going through the sides of the panels and creates custom finished look.



Hammer tenter hook into the wall.



Hook the last outer drapery hook onto the tenter hook.